

To wear or not to wear & Fact

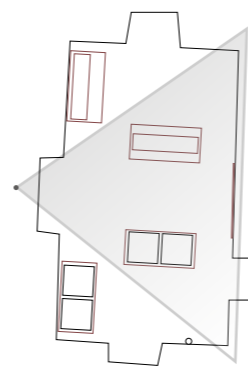
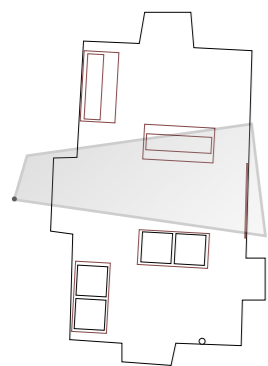
Exhibition

at the Estonian Museum of Applied
Art & Design in Tallinn,

from 9th July – 19th September

2021

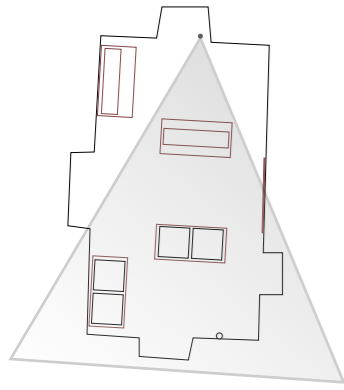




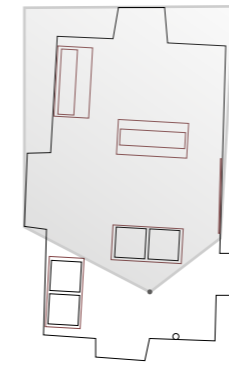
From the entrance:
on the right Process of Making pieces
on the left To wear or not to wear pieces
Video Projection at the Background



Photo by ETDM, photographer Hedi Jaansoo



From To wear or not to wear
Process of Making at the Background



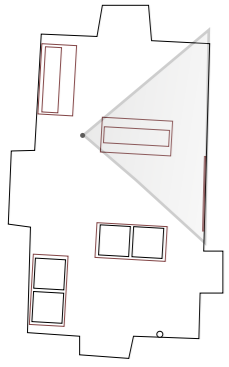
From Process of Making
To wear or not to wear at the Background



Photo by ETDM, photographer Hedi Jaansoo

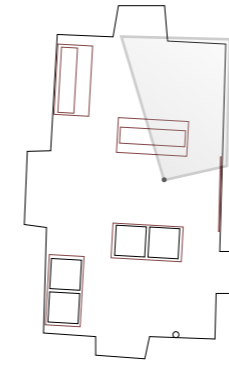


Photo by ETDM, photographer Hedi Jaansoo



To wear or not to wear – Not to wear

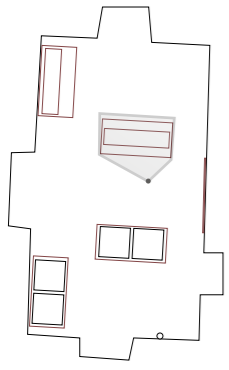
Installation Rings : 5 designs, 4 materials, 2 or 3 sizes = 12 reproductions



To wear or not to wear – Not to wear



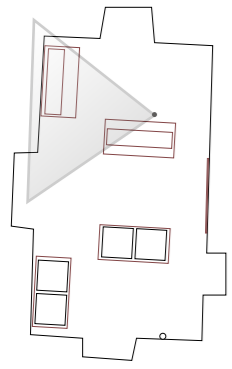
KANDA VÖI MITTE KANDA
TO WEAR OR NOT TO WEAR
porfalaari, silloin, pölypölyään kummi, vahi
pöytäalumi, alkone, pohyrtähti gum, resin
2027



To wear or not to wear – Not to wear

Instalation Rings : 5 designs, 4 materials, 2





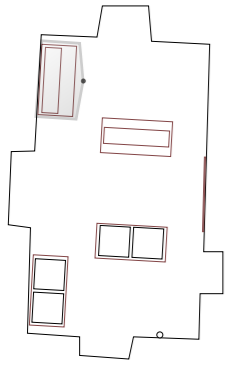
Fact Project
General View



Fact
Instalation Jewels: Bracelets, Earrings &
Rings



Photos by ETDM, photographer Hedi Jaansoo



Fact

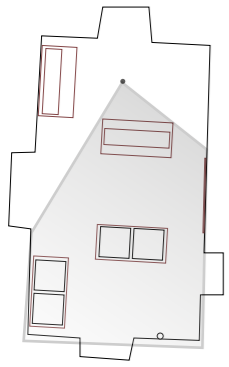
Instalation Jewels:

Bracelets 2 gr of Gold,
Earrings 1 gr of Gold (0,5 + 0,5)
Rings 0,5 gr of Gold

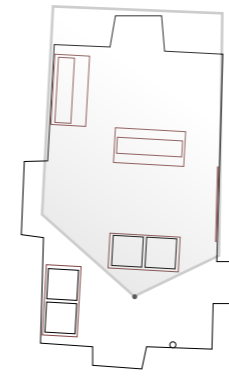


Photos by ETDM, photographer Hedi Jaansoo

Photos by ETDM, photographer Hedi Jaansoo

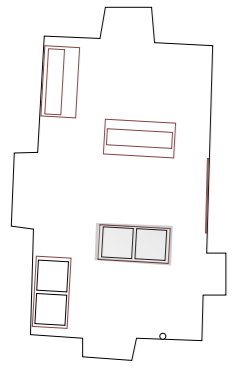


Process of Making General View



Process of Making. Instalation Pieces & Exhibition Pieces in the background





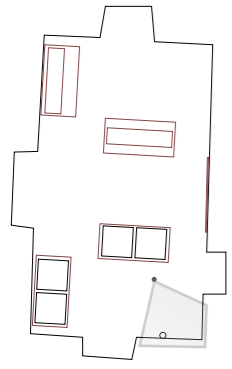
Process of Making. Instalation Pieces Details



Photo by ETDM, photographer Hedi Jaansoo



Photo by ETDM, photographer Hedi Jaansoo



Process of Making

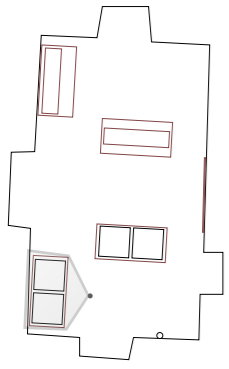
To wear or not to wear : To wear



Photo by ETDM, photographer Hedi Jaansoo



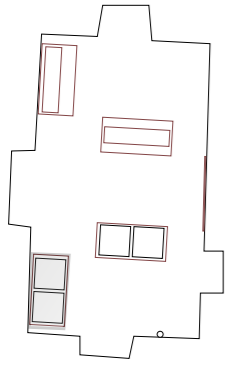
Photo by ETDM, photographer Hedi Jaansoo



Process of Making

Molds, models, broken pieces and tries
Installation





Process of Making

Molds, models, broken pieces and tries Details



Photos by ETDM, photographer Hedi Jaansoo



Thanks to
Estonian Museum of
Applied Art & Design,
specialy to Ketli Tiitsar,
for the chance & the help.

Aitäh!